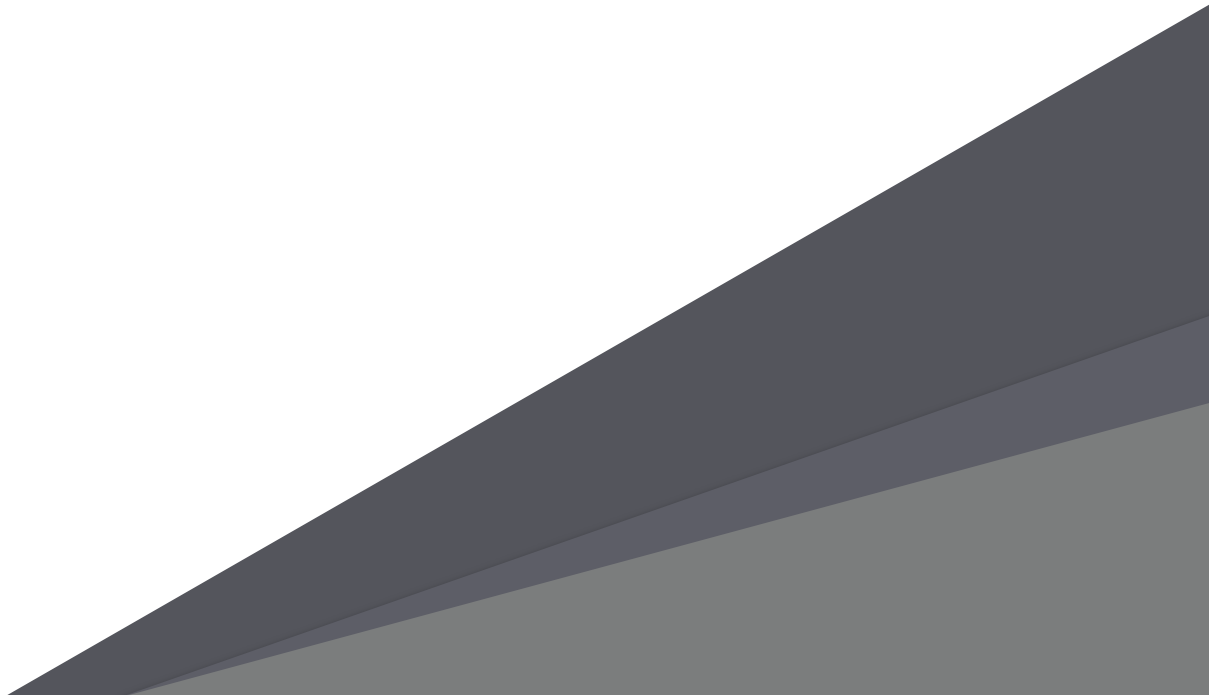


peppermint™
robotics

.....

Peppermint Floor Cleaning Robots

.....





SD 45



SD 100

SCRUBBER DRIER ROBOTS

Scrubber Dryer Robots

Designed for daily cleaning /
deep cleaning needs at
Commercial and Industrial Real
Estate

Versatile Productivity features and
Safety Features

Easy to operate, maintain and
manage fleet of robots

Now in two capacities

- 45 Litres
- 100 Litres



Ideal for



Aviation



Healthcare



Offices



Hospitality



Education

Intelligent

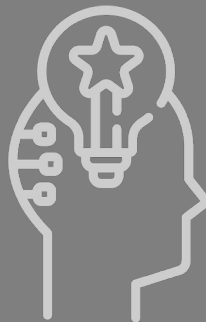
Patented Cleaning Technology

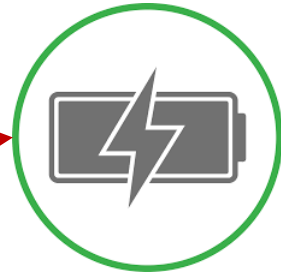
Robots can be programmed to change behaviour based on floor types and speed of operations



Intelligent Coverage System

Peppermint Path Planner Software (V2.0) enables planning team to define time + water consumption in each cleaning region, thereby maximising coverage



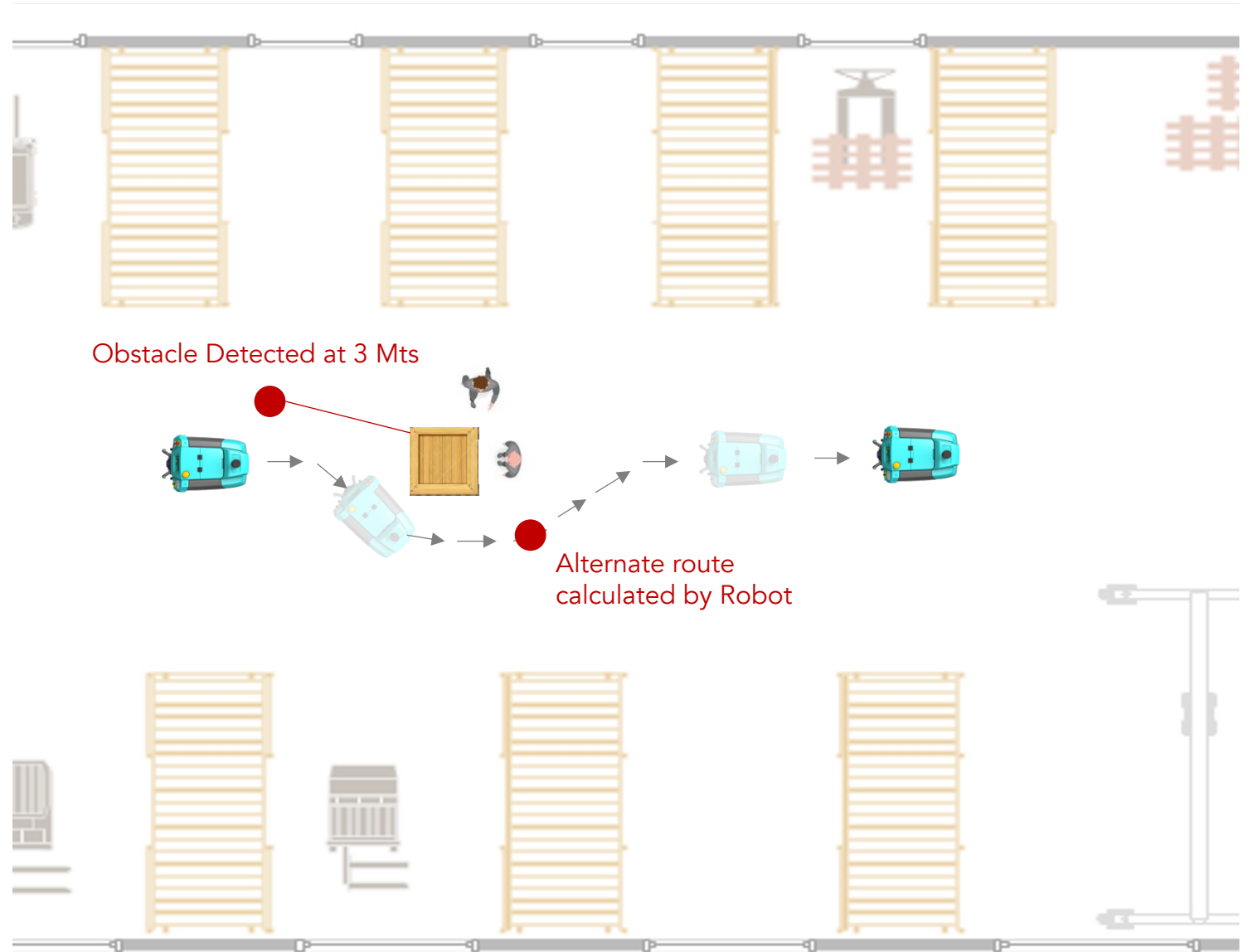


Best in Class Battery Backup

- Upto 8 Hours of battery backup with Peppermint Optional Large Battery
- Seamless charging via Automotive grade DC Charging
- Smart BMS keeps battery health and life in check for upto 1500 cycles

Obstacle Avoidance

- 4 Intelligent Sensors to detect obstacles
- 4 Support Sensors for additional safety
- Robot thinks of optimum alternate route and adopts it
- Detects obstacle at 3-5 mts and takes <2.5 mts clearance to avoid obstacles





Multi Modes & Multi Brushes



- Autonomous Operations
(Without need for Wifi / Internet)



- Remote Controlled Mode with
Peppermint Controller / App



- Manual Operations – via control
buttons on the robot



- Super Soft Nylon Brushes for
laminated / epoxy floors



- Polypropylene Brushes for
medium hardness floors like
granite / hard tiles



- Silicon Carbide Brushes for
Hard Floors like RCC

Easy Touch screen interface + Cloud Connected Dashboard



Touch Screen

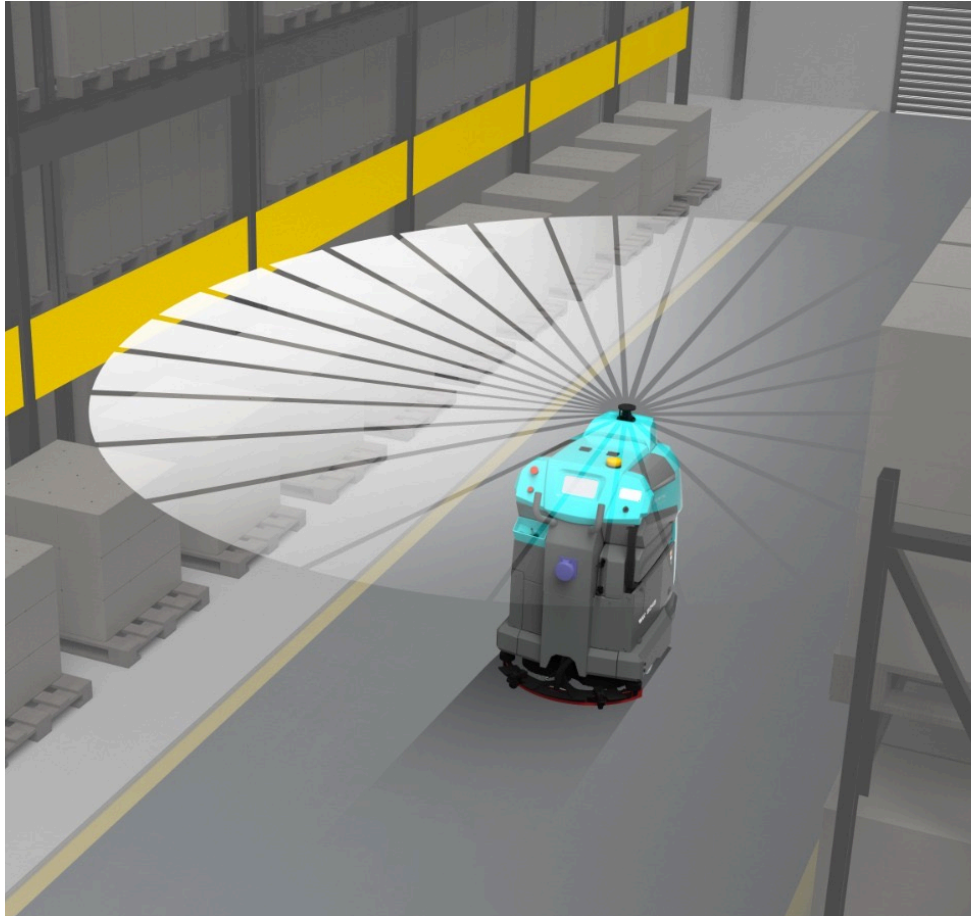
- Change cleaning modes
- Customize Water Flow / Brush RPM / Robot Speed
- Diagnostics and Maintenance Data



- Cloud connected Robot Management Portal
- Check real-time coverage and health of your robot
- Manage multiple robots with a click on your laptop
- 100% Visibility of all your operations

| Robot No | Deployed At | Last Updated | In Warranty | Current Status | Actions |
|-----------|-------------|--------------|-------------|----------------|---------|
| SD0451028 | | 19 hours ago | No | ACTIVE | |
| SD0451001 | | | No | DISSCONNECTED | |
| SD0451003 | | | No | DISSCONNECTED | |
| SD0451004 | | 18 hours ago | No | ACTIVE | |





Best in Class Safety Features with Customisation

Long range
2D & 3D Lidars

Depth Sensors with $> 200^\circ$ coverage
(Can detect in the dark as well)

Automotive grade Ultrasonic Sensors –
for Glass and sudden obstacle detection

Li-Ion Batteries for performance
through large temperature range

Emergency
Stop Button

Beacon & Buzzer
(For Visual and Audio Alerts)

Customizable
Detection Range

Intelligent Static &
Dynamic sensing



Sustainable & Accountable Operations



Autonomous
Operations
saving 1000s of
Labour Intensive
Manhours



Round the clock
service &
maintenance
support



Analytics & Real
Time Reporting



Best in Class
Battery backup
of upto
8 hours



Saving >
50% of Electricity
&
~20% of water



Reduced
Chemical Usage
With Dynamic
Clean



Certification
For Robot
Operators



Upskilling
Housekeeping Staff
to Robot
Operators



Peppermint Robots are designed to be easy to Operate, Maintain & Repair

Modular Platform

~90%
Shared
Components

>40%
Reduction in Assembly
& Service TAT

Best in Class
Cost of
Ownership

Efficient Design

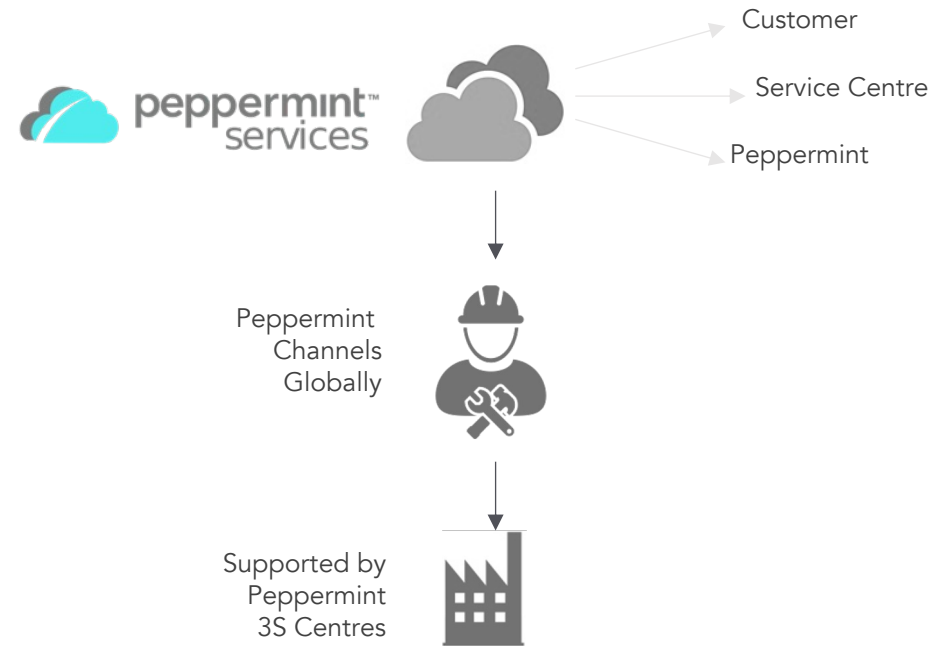


4 Patents

Provisional Approvals received

2 Patents

In Process



Peppermint 3S Centres
(Sales, Service, Spares)



INDIA



MENA
(UAE, Bahrain)

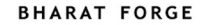


USA



Happy Customers Across the world

MANUFACTURING



PHARMA



COMMERCIAL REAL ESTATE



AVIATION





A Qualcomm & SINE IIT Bombay supported

Authorised Distributor



**Gulf
Worldwide
Distribution** FZE



MO 0253 Jebel Ali Free Zone,
PO Box 261619, Dubai,
United Arab Emirates

Tel: +9714 8814100

Fax: +9714 8814343

Email: sales@gulfworldwide.net

Web: www.gulfworldwide.net

